

# Universal Timer

## Online Task Management

### Description

**A simple universal timer that allows the grower to program routine tasks and make adjustments or force events remotely at any time.**

The Autogrow universal system is based around the CompuGrow software that supports our greenhouse and irrigation controllers together with, up to, 16 Output Modules that each have 10 outputs.

### Advantages to the Grower

There are many operations on a growers property that are routine and don't require the growers constant attention whilst needing to happen at very specific times. The Universal Timer has been developed for exactly this purpose and can achieve any routine or even non routine task whenever the grower requires.

### System Principle

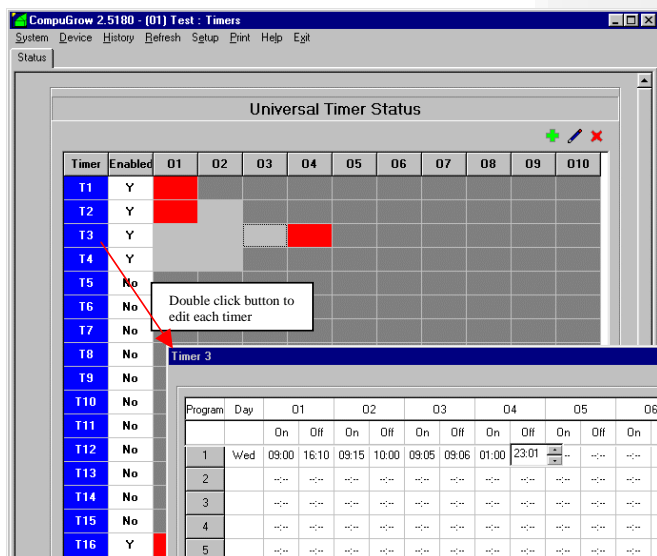
The user friendly software allows you to set complex on/off programs for each output of each of the Timer Output Modules with a resolution of just one minute. The 24V AC outputs are programmed by day-of-week and by time-of-day and can have as many as 10 on/off cycles for each of 10 programs. In addition, each output has a local indicator LED and a manual override switch allowing you to force it ON, OFF or AUTOMATIC. If an OFF time is set to be earlier than the corresponding ON time, the controller assumes that the OFF time is on the day following. This is useful for some lighting applications where, for example, a car-park light is required to come ON in the evening and go OFF the following morning.

ON periods cannot exceed 24 hours although it would be possible to stack programmed times, one after the other, to achieve longer periods.

### Applications

Dump reservoir tanks  
Inhibit dosing  
Switch on & off fans  
Start/ stop fogger  
Activate pumps  
Turn on/off lighting  
Irrigation  
Fertigation pumps  
Disable functions via relays  
Enable functions via relays

**In fact, any time  
Managed task !**



The failsafe condition is all outputs off after a power failure or on losing communications with the PC all outputs revert to this state. If you require the opposite to be true then this is easily achieved by the use of a relay.

